

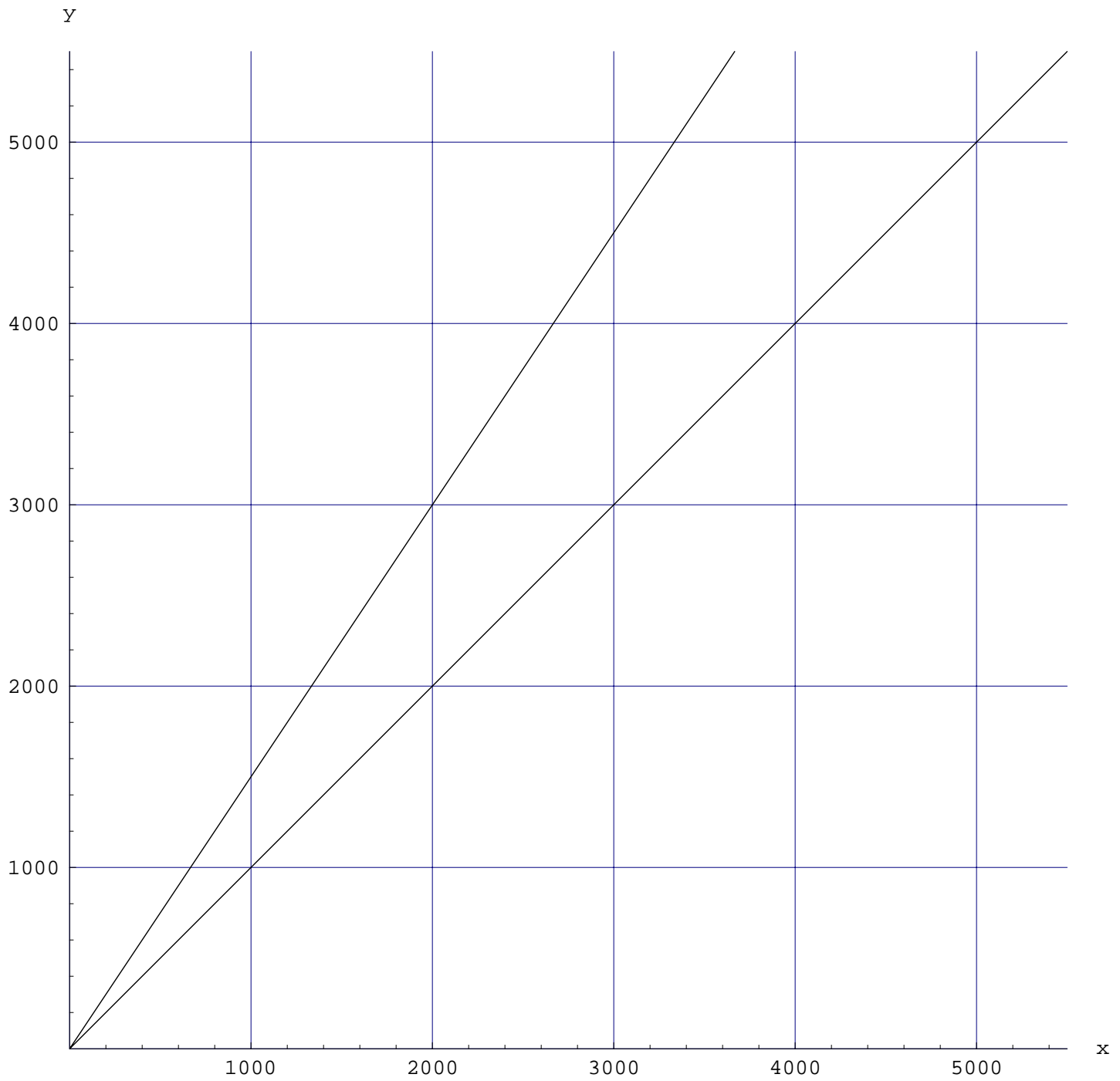
THE UNIVERSITY OF SYDNEY
MATH1013 LIFE SCIENCES EQUATIONS

Semester 2

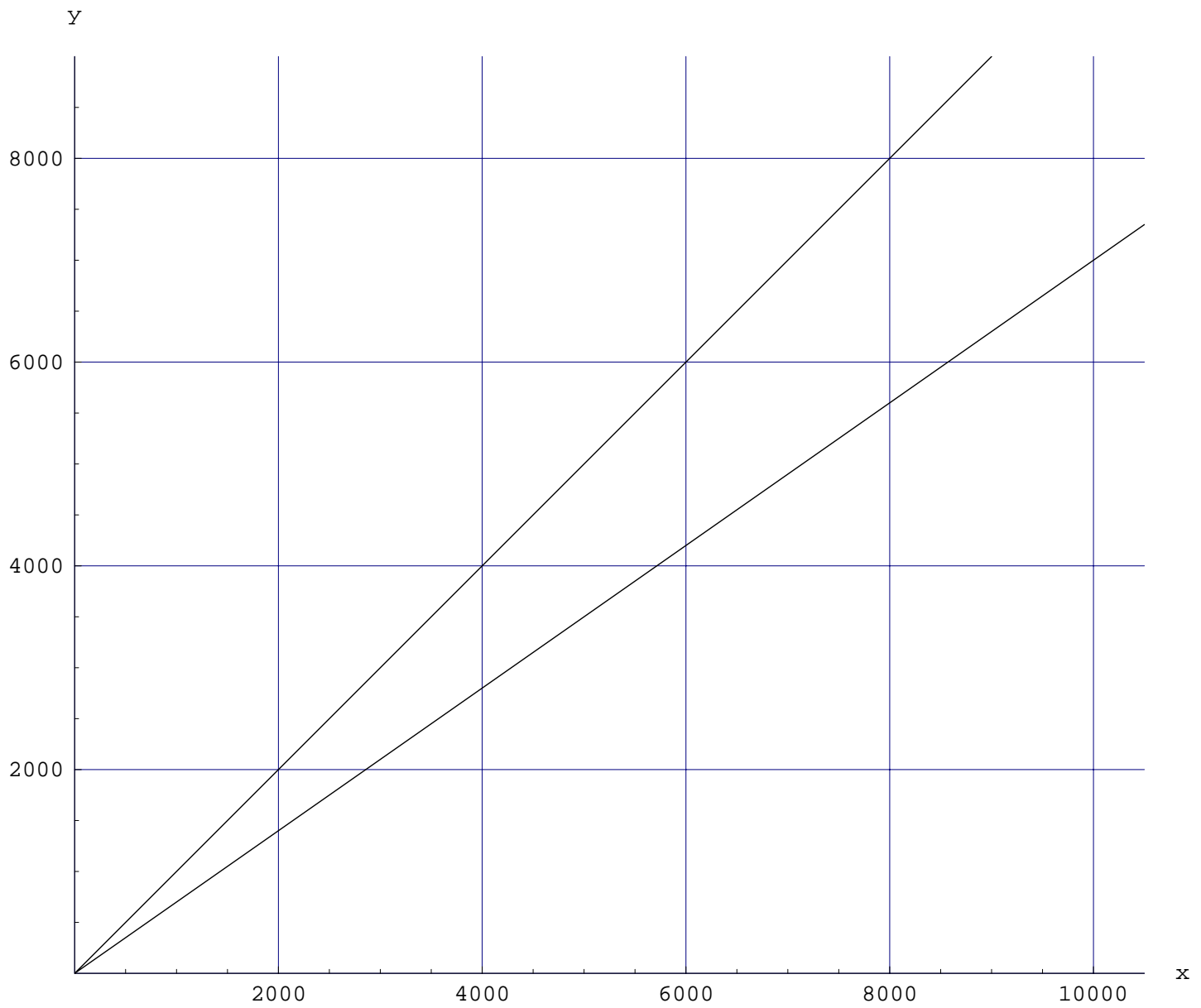
Worksheet for Week 6 Question 1

2003

Week 6 Question 1: $y = 1.5x$ and $y = x$.



Week 6 Question 2: $y = 0.7x$ and $y = x$.



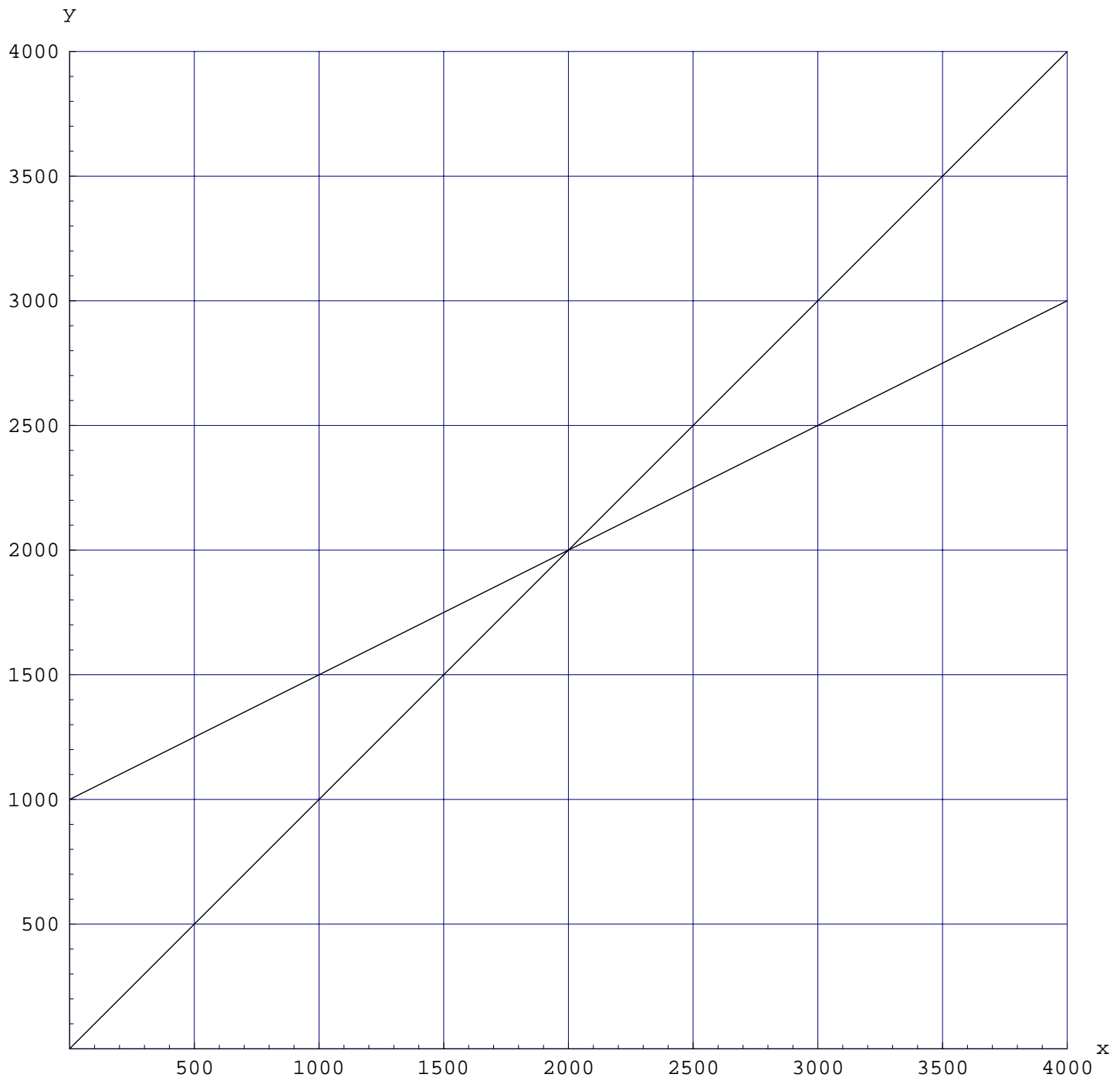
THE UNIVERSITY OF SYDNEY
MATH1013 LIFE SCIENCES EQUATIONS

Semester 2

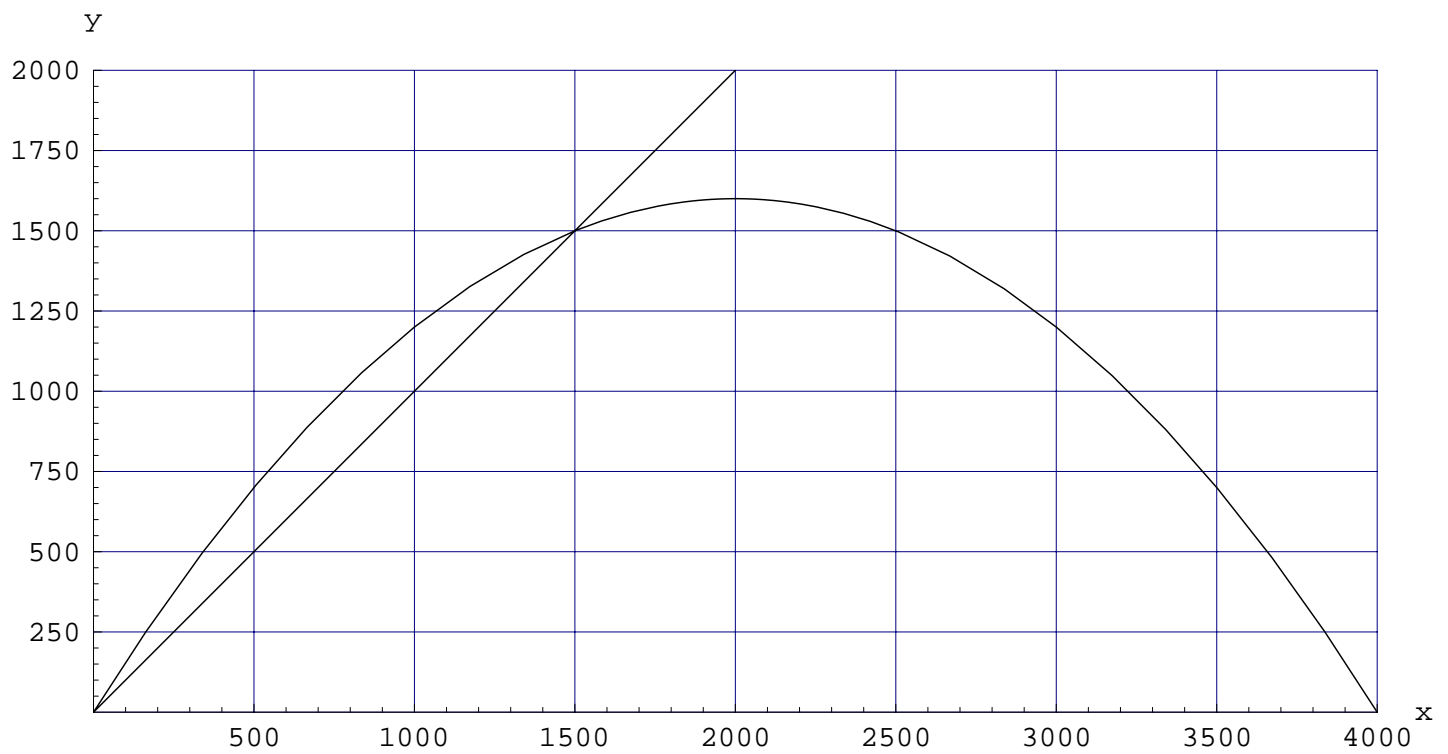
Worksheet for Week 6 Question 3

2003

Week 6 Question 3: $y = 0.5x + 1000$ and $y = x$.



Week 6 Question 4: $y = (1.6 - 0.0004x)x$ and $y = x$.



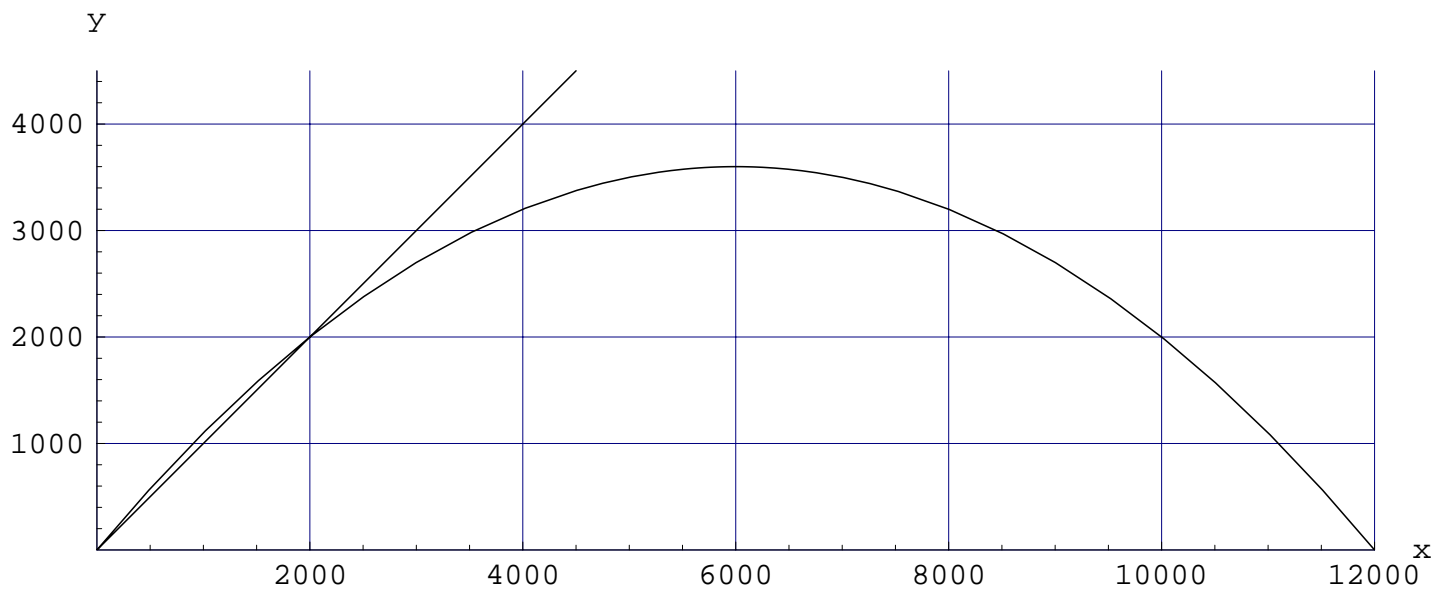
THE UNIVERSITY OF SYDNEY
MATH1013 LIFE SCIENCES EQUATIONS

Semester 2

Worksheet for Week 6 Question 5

2003

Week 6 Question 5: $y = (1.2 - 0.0001x)x$ and $y = x$.



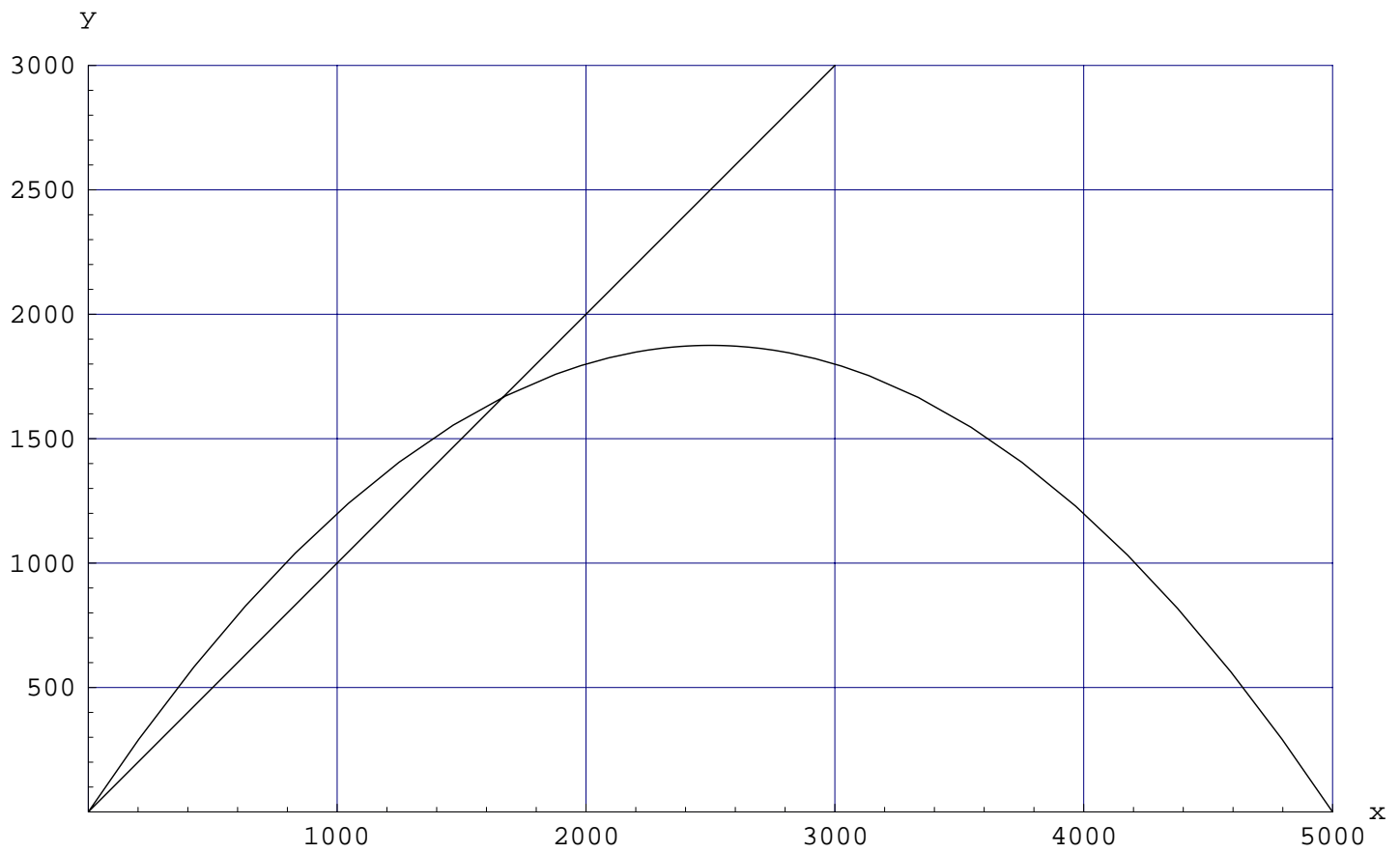
THE UNIVERSITY OF SYDNEY
MATH1013 LIFE SCIENCES EQUATIONS

Semester 2

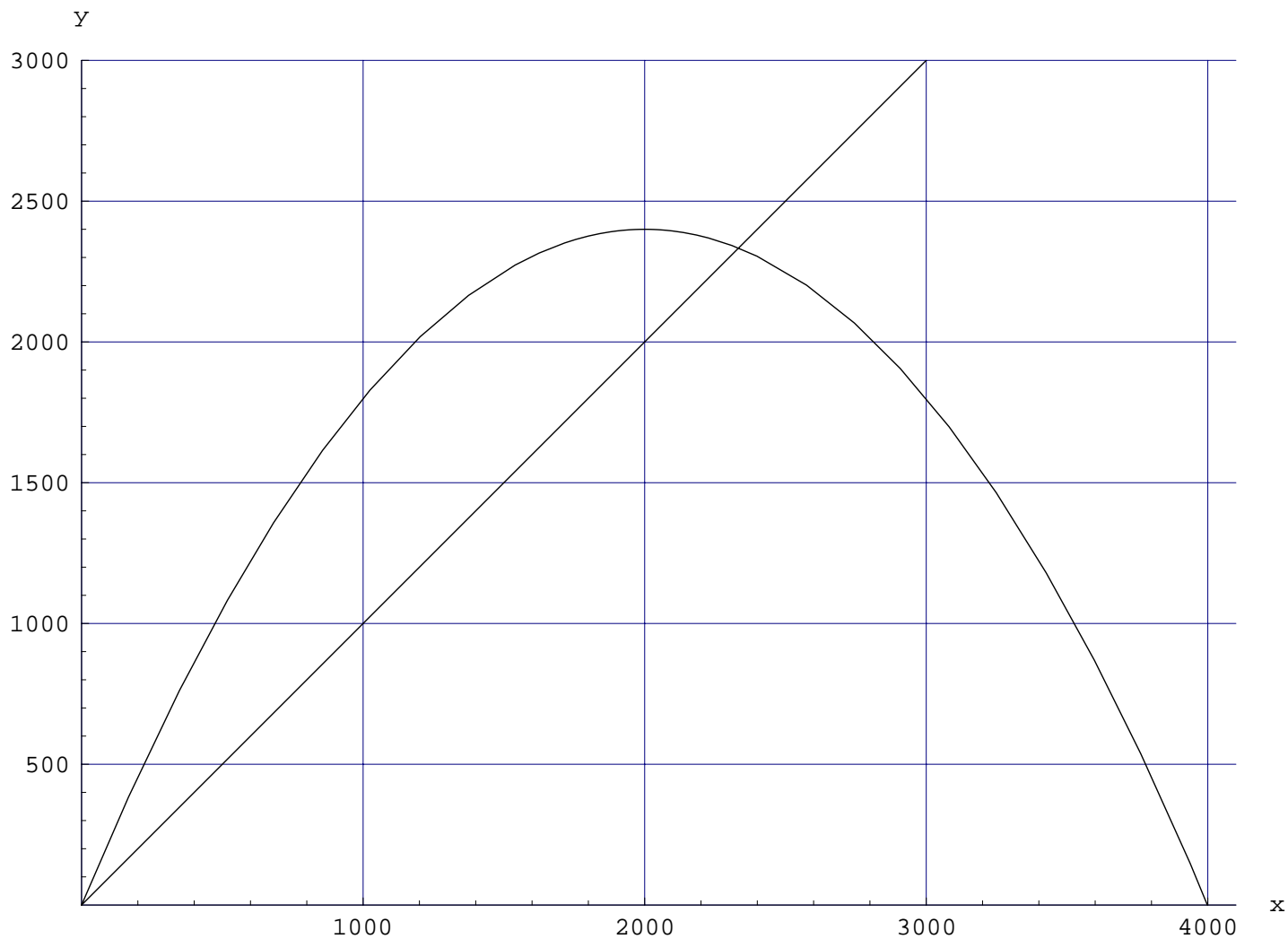
Worksheet for Week 6 Question 6

2003

Week 6 Question 6: $y = (1.5 - 0.0003x)x$ and $y = x$.



Week 6 Question 7: $y = (2.4 - 0.0006x)x$ and $y = x$.



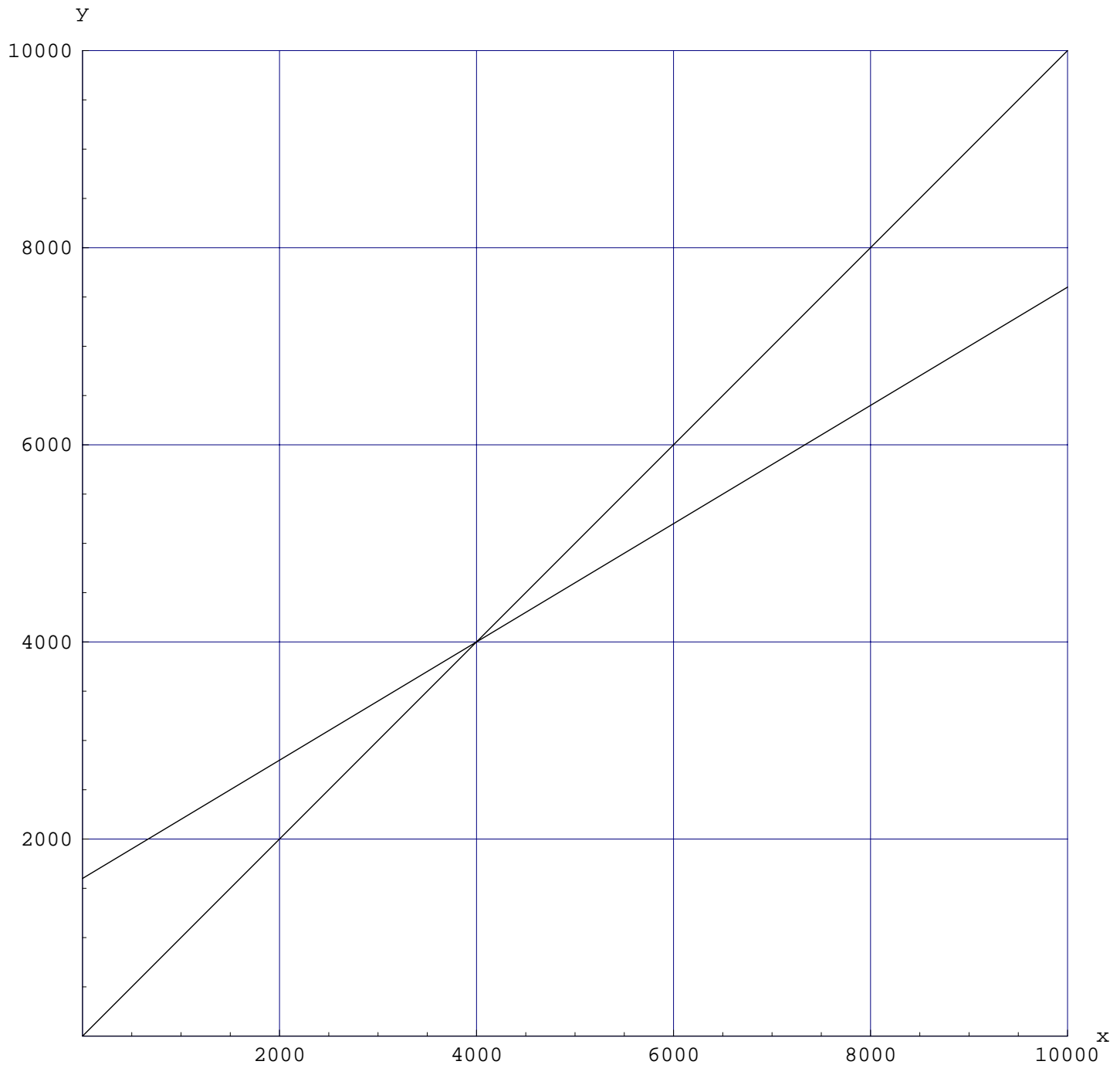
THE UNIVERSITY OF SYDNEY
MATH1013 LIFE SCIENCES EQUATIONS

Semester 2

Worksheet for Week 6 Question 8

2003

Week 6 Question 8: $y = 0.6x + 1600$ and $y = x$.



Week 6 Question 9: $y = 0.6x$ and $y = x$.

